

Humane Happenings



Humane Society of Citrus County FLORIDA INC.

Volume 3, Issue 6

June 2009

Rabies Clinic Great Success!



On June 13, 2009, the Humane Society of Citrus County held their first FREE Rabies Clinic for those citizens of Citrus County who may not have had the funds to give their pets rabies

vaccine and County tags. Thanks to the Board of County Commissioners and Animal Services for joining with us in providing this free service. Approximately 450 pets received their vaccination and tags. Many people talked about their difficult financial situations and were grateful for this opportunity.

Thank you to all the organizations who assisted in bringing this clinic to the citizens of Citrus County. We could not have done it without the generous assistance of the Humanitarians of Florida, Dan Rebman DVM of Floral City Animal Clinic, Citrus County Animal Services, Citrus County Board of County Commissioners, the Humane Society of Inverness, Room For One More Pet Rescue, and the many volunteers who gave so willingly of their time and effort. And thank you to the Citrus County Chronicle for once again sponsoring our event.

Our Mission:

THE HUMANE SOCIETY OF CITRUS COUNTY FL INC IS A 501(C)3 CORPORATION DEDICATED TO THE PROTECTION OF ALL ANIMALS. IT IS OUR GOAL TO RESCUE AND FIND FOREVER HOMES FOR AS MANY ABANDONED, ABUSED PETS AS POSSIBLE AND TO TRY TO EDUCATE THE PUBLIC TO THE IMPORTANCE OF SPAY/NEUTER TO ALLEVIATE THE PROBLEM OF THE OVER-POPULATION OF UNWANTED, ABUSED, ABANDONED PETS..

INSIDE THIS ISSUE:

KEEP YOUR DOG COOL	2
TIME TO PURGE/ PLEDGE REQUEST	2
EASY WAY TO HELP	2
HAPPY TAILS	3
DOG FOOT PROBLEMS	4
THANKS TO YOU	4
PET TIP OF THE MONTH	5
LOOKING FOR FOR- EVER HOMES	5
MESSAGE FROM THE PRESIDENT	6-7
UPCOMING EVENTS	8



KEEP YOUR DOG

COOL!

- ◆ KEEP PETS IN WELL VENTILATED AREAS
- ◆ EXERCISE EARLY IN THE MORNING OR LATE AT NIGHT WHEN IT'S COOLER
- ◆ MINIMIZE EXERCISE IN HOT WEATHER
- ◆ DO NOT LEAVE YOUR PET IN A CAR "EVER"
- ◆ KEEP PETS INDOORS DURING EXTREME WEATHER
- ◆ LIMIT SUN EXPOSURE DURING MID-DAY HOURS
- ◆ GIVE YOUR PET PLENTY OF FRESH, COOL WATER AND MAKE SURE THEY DRINK IT
- ◆ FOR SUDDEN TEMPERATURE CHANGES, GIVE YOUR PET TIME TO ACCLIMATE

Humane Happenings

TIME TO PURGE OUR NEWSLETTER PLEDGE YOUR SUPPORT

Yes, I want to continue receiving my newsletter.

NAME:

ADDRESS:

CITY/ST/ZIP:

I would like to help with a donation of:

\$10 _____ \$25 _____ \$50 _____ \$100 _____ Other _____

I would like to pledge a monthly amount of:

\$10 _____ \$25 _____ \$50 _____ \$100 _____ Other _____

NOTE: Credit Card/Pay Pal payments can be made online at:

www.humanesocietycitrus.com



RETURN IN
ENCLOSED ENVELOPE

WAYS YOU CAN HELP!

Before heading out to the store, go to www.goodsearch.com and select the Humane Society of Citrus County as your favorite charity. You can shop online at Wal-Mart, Pet Smart, Barnes & Noble, Office Depot and many other stores and we receive a percent of the sale. Also, check out www.humanesocietycitrus.com and click on the Stuffed Adoptions link. Remember also to go to www.freekibble.com to help feed shelter animals.



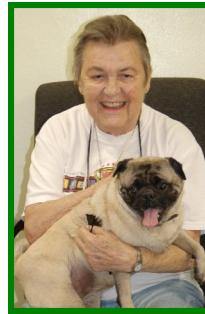
SOME OF OUR HAPPY TAILS!



TOBY & NEW FAMILY



FRANKIE & NEW MOM



BRIDGET & NEW MOM



WINNIE & NEW MOM & DAD



PORTIA & NEW GIRL



CICI & NEW MOM



SHEENA & NEW MOM



BUTTERCUP & NEW GIRL



ARIA (RT) & NEW FAMILY



AUSTIN & NEW DAD



SHEA (LEFT) & NEW FAMILY



OTIS & NEW MOM & DAD



CASHMERE AKA MILLIE (CTR) & NEW FAMILY



TRIUMPH & NEW MOM

DOG FOOT PROBLEMS

Dogs spend so much time running, jumping and generally romping around. It's no surprise then that dog foot problems are fairly common. Examine your dog's paws regularly - think of it as a "preventive" health check! Doing so can help you identify minor problems before they become more serious and more costly problems. Here's a quick summary of some of the more common dog foot problems:

- * Biting, licking or chewing at paws often indicate allergies. Your vet can assist you in determining what substances, if anything, your dog may be allergic to.
- * Torn or fractured nails can occur when the nail catches on something. This is extremely painful and the nail may need to be completely removed by your vet.
- * Cut on the paw. Dogs run through all

sorts of terrain so a cut isn't uncommon. Wash cuts out and apply an anti-septic ointment. Wrap some gauze around it and cover with a soft sock. Large or deep cuts should be examined by your vet.

- * Cracked or dry paw pads. Apply a moisturizer but not too often. Your dog relies on tough paw pads for protection.
- * Foreign objects lodged in the paw. This can be burrs, seeds, dried mud or just matted fur. Carefully remove and clip mats. Be careful not to clip the web.
- * Interdigital cysts. These are lumps that form between the paw pads. Your vet can perform a fine needle aspirate of the lump to check whether it is malignant or benign.

THANKS TO OUR MAY SUPPORTERS

- | | |
|--------------------------------|---|
| * Una & Alex Burgos | * Laurie C Newman |
| * Michelle Miller | * Kathryn Endicott |
| * Fred & Donna McEwen | * Sandra Knapp |
| * Betty Lindskog | * Dollie James |
| * Charles & Rebecca Wagner | * Jack & Earlene Kidd - In Memory of Jerry Zadera |
| * Genevieve Verdone | |
| * Marvin & Evelyn Aaberg | |
| * Charles King | |
| * Clifford & Agnes Wolfe | |
| * Dan & Patti Cyr | |
| * Tom DeMasters & Jack Sanborn | |
| * Mickey Mullen | |

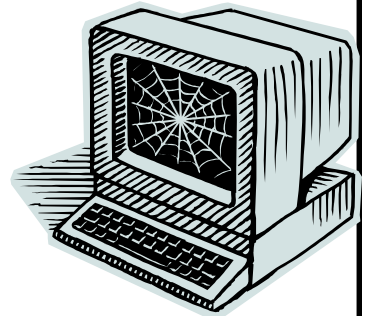


PET TIP OF THE MONTH

FOODS YOU SHOULD NEVER FEED YOUR PETS

- * Alcoholic Beverages (contains ethanol-toxic to pets)
- * Apples, apricots, cherries, peaches, plums
- * Grapes and raisins (can cause kidney failure)
- * Baking powder and baking soda (can cause heart failure)
- * Chocolate (nervous system stimulant-toxic to pets)
- * Coffee grounds and beans (causes caffeine toxicity)
- * Fatty foods and dairy products (causes pancreatitis)
- * Macadamia nuts (as few as 4 can be toxic)
- * Moldy/spoiled food (food poisoning)
- * Nutmeg (high levels can be fatal)
- * Onions and garlic (difficult for pets to digest)
- * Xylitol (sugar substitute-toxic)
- * Yeast dough (will rise in your dog's stomach)

WE'RE ON THE WEB
AT:
www.humanesocietycitrus.com



IMPORTANT:

June - Adopt a Shelter Cat Month



Looking For Their Forever Homes



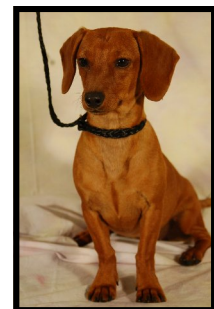
JUDGE



BELLE



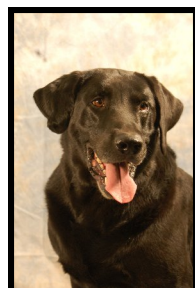
CLIPPER



FLICKA



JAKE



MAX



JORDAN



ROSCO

MESSAGE FROM THE PRESIDENT

In conceiving the Humane Society of Citrus County in 1978, the founders had three main objectives in their mission statement: to establish and maintain a shelter for abandoned, abused animals in Citrus County, to promote the adoption of these animals, and to promote spay/neuter and proper medical care to help alleviate the overpopulation of unwanted animals. When the current Board took over in November of 2005, these objectives had not been met. Funds were available but were not utilized for their intended purpose. We immediately began renovations to the vacant building previously bought by the prior Directors, expending over \$62,000.00 and in January of 2007, Paws-itively Pets opened its doors for some of the many homeless pets at Animal Services. Over 1400 dogs, cats and horses have now been placed in forever homes.

Now, almost 3 years later, we, like most non-profit organizations, are struggling to keep our shelter open. Donations and adoptions, our only means of support, are down. We have a few faithful monthly supporters and we are grateful for them but with the rise in the cost of everything from utilities to insurance and supplies, we are having a difficult time. Last month both the washer and dryer needed to be replaced, and the well pump was struck by lightning and had to be replaced at a cost of \$995.00.

We now have a number of dogs who will live out their lives here at our shelter, dogs that for medical reasons, will not be placed for adoption, dogs like BELLE. Belle, a sweet little Shihtzu, is in congestive heart failure and takes daily heart medication. She was rescued from Animal Services and placed in what we thought was her forever home. A year later, she was picked up in the woods of Lecanto, running at large. Her little feet were so matted, she could hardly walk. We again rescued her



and because her health has deteriorated, she has found her forever home here at BELLE the shelter and stays with me at my home.

Sweet, sweet PEANUT has been at our shelter for over 6 months. He was rescued from Animal Services. His prior owners left him at Animal Services to be euthanized because of allergies. A trip to the vet would have shown his cough was not allergies but was actually caused by congestive heart failure. If you have visited the shelter, he is the sweet little guy who greets you. And he too will be with us forever.

PEANUT

Then there is grumpy ole' SOCKS. Suffering from congestive heart failure, Socks is very choosy who he lets love on him or pick him up. Because of his medical condition, he'll need us forever.



SOCKS

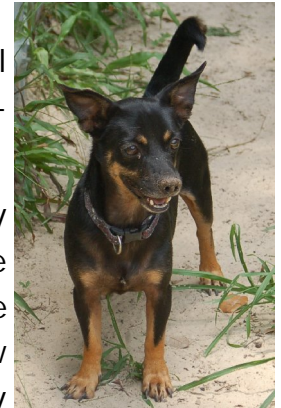
NAOMI and RIOT are puppy mill dogs. Both are so traumatized from their experiences that they may never trust humans enough to allow themselves to be loved and will be forever at our shelter.



NAOMI

They need your help! In order for us to continue to rescue the babies and to take care of those who need forever care, we ask for those of you who care and are able, to pledge a monthly amount so we will know we have the support to continue on. (See Form on Pg. 2) A pledge by 100 people of only \$27 a month would help keep the shelter open for an additional month. While this is a small amount, it means so much to the many animals we rescue. If you cannot pledge, please consider making a donation. Any amount, no

matter how small, makes a big difference. And because we are a 501 (c)3 organization, your pledge or donation is tax deductible. You will receive an Annual Statement for tax purposes, listing all of your donations.



RIOT

Without your pledged support, this fall, we will have to temporarily close our doors and hope for the economy to improve. We will continue to rescue and foster in our homes but space is very limited. There are so many companion animals in our community waiting to start a new life. We will do what we can to continue to rescue them and hopefully you, our supporters, will continue to support us as we struggle to find new ways to do what we do.

Thank you to all of you who have supported us in the past and to those of you who consider making a monthly pledge or donation. With your help, we will be back stronger than ever!

Lisa Jacobson

President HSCC

The world is a dangerous place, not because of those who do evil but because of those who look on and do nothing.

Humane Society of Citrus County

751 S Smith Avenue
Inverness FL 34451
Phone: 352-341-2222
E-mail: bonniea15@yahoo.com



If you would prefer we e-mail your newsletter, please let us know.



PAWS-ITIVELY
PETS ADOPTION
CENTER

NEXT GENERAL

MEETING:

Meetings Will Resume
In The Fall

New Members, Volunteers and guests are always welcome to join us at our monthly meetings. We are always looking for new ideas to help rescue more of the many pets who find our door. Please join us!

Senior Prom

Did you get to go to your Senior Prom? Well watch for an upcoming opportunity to help the many pets we rescue and have a great evening of music and dancing. "Senior Prom" coming this Fall. More details later.

THOUGHT FOR TODAY

"When I play with my cat, who knows if she is not amusing herself with me more than I with her." ~ Montaigne



OUR LEGAL STATUS: Doc #745226 issued December 12, 1978 on file in Tallahassee. Registered with Florida Department of Agriculture & Consumer Affairs. Copy of the official registration and financial information may be obtained from the Division of Consumer Services by calling toll-free 800-435-7352 within the state. Registration does not imply endorsement, approval or recommendation by the State. All dues and contributions are tax exempt to the full extent allowed by law. Our registration number issued by Florida Department of Agriculture & Consumer Services is CH1815. 100% of all contributions are retained by Humane Society of Citrus County, FL, Inc. No percentage is retained by any professional solicitor.